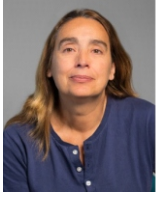


HUMAN RESOURCES



Cristina García-Viguera, Ph.D
CSIC - Research Professor
cgviguera@cebas.csic.es



Diego A. Moreno, Ph.D
CSIC - Sci. Researcher
dmoreno@cebas.csic.es



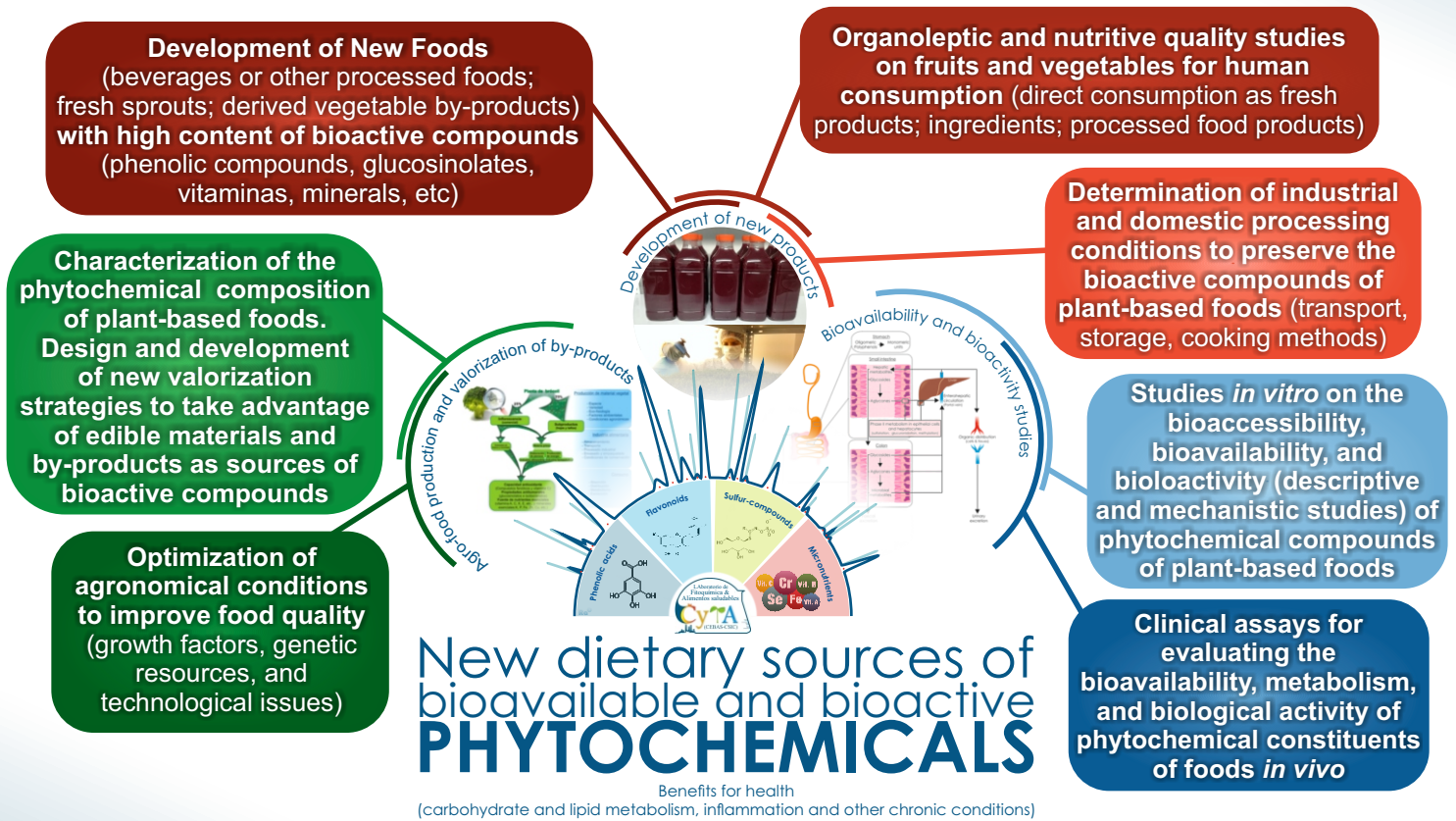
Raúl Domínguez-Perles, Ph.D
CSIC - Tenured Scientist
rdperles@cebas.csic.es



Sonia Media Escudero, Ph.D
CSIC - Postdoctoral researcher hired Ramón & Cajal Program (Ministry of Science and Innovation)
smescudero@cebas.csic.es

RESEARCH LINES

From Farm to Health | Integrated Studies



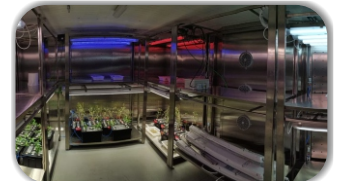
INFRASTRUCTURES & KNOW-HOW - RESOURCES - COLLABORATIONS



Experimental Farm
("La Matanza", 33 Ha),
(greenhouses with hydroponic systems and controlled/uncontrolled growth conditions).



Analytical equipments
HPLC-DAD-ESI-MS;
HPLC-DADs, UHPLC-ESI-QqQ-MS/MS,
UHPLC-DAD-ESI-QTOF-MS/MS
HPLC-UV, EAA-ICP.
(http://www.cebas.csic.es/general_spain/metabolomica.html)



Controlled Growth Chambers
(environmental parameters) and **storage**.



Bioavailability, metabolism, and bioactivity labs and facilities according to the requirements of *in vitro* and *in vivo* studies, nutritional interventions, and clinical studies.

ACTIVE COLLABORATIONS with the Regional Health System, food industries and Societies, and other Research Institutions and Universities from all over the world.
CEBAS-CSIC+UPCT Associated Research Unit "Food Quality and Risk Assessment"
(<https://www.upct.es/grupos-investigacion/centros/UACSA.php>)